

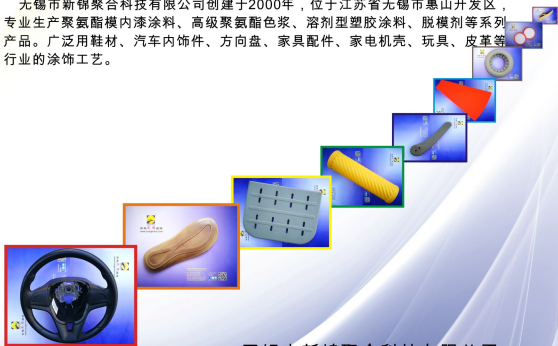


常为**新.锦**自来

关于我们/ABOUT US

SUNGENIUS was established in 2000, engaged in the production of Inmould Coating, Soles Paint, PU Color Paste, Release Agent, Primer and Adhesive etc., which was widely used for toys, auto part and shoe soles so on. We have good reputation, excellent products in this field of China, we hope to start a friendly cooperation for both of us to get a win-win!

无锡市新锦聚合科技有限公司创建于2000年，位于江苏省无锡市惠山开发区，专业生产聚氨酯模内漆涂料、高级聚氨酯色浆、溶剂型塑胶涂料、脱模剂等系列产品。广泛用鞋材、汽车内饰件、方向盘、家具配件、家电机壳、玩具、皮革等行业的涂饰工艺。



Please scan QR code to get more information.

扫描二维码可以获得更多信息。



无锡市新锦聚合科技有限公司
SUNGENIUS TECHNOLOGY CO.,LTD.

Tel : +86-510-8376-3355

+86-510-8311-3355

Service in English:

+86-510-8115-3355

Fax : +86-510-8376-3358

Web : www.sungenius.com



印刷油墨 | SHOE SOLES PRINTING INK

常为**新.锦**自来

The product is used for the sole and plastic product printing coloring, with quick-drying, high tinting strength, and color bright effect.

Use steps:

1. First spray primer paint, then dry.
2. Adjust the product to fit viscosity, use machine printing sole or plastic product.

Usage:

- a. The product is concentrated, needn't dilute before use.
- b. The suggested compounds to fit viscosity.
- c. It is recommended to use our matting agent making glossy effect.
- d. Please keep draughty when using the product.
- e. Suggested to test before large scale production.
- f. Read and know the MSDS before use the product.



Please scan QR code to
get more information.

扫描二维码可以
获得更多信息。



无锡市新锦聚合科技有限公司
SUNGENIUS TECHNOLOGY CO.,LTD.

Tel : +86-510-8376-3355

+86-510-8311-3355

Service in English:

+86-510-8115-3355

Fax : +86-510-8376-3358

Web : www.sungenius.com



聚氨酯色浆 | PU COLOR PASTE

常为**新.锦**自来

The products have 2 codes, one is mix in Polyols directly, other one is special for dosing machine via pump mix in pouring head, both for polyether and polyester system, apply to PU shoe soles, PU DIP shoes.

The product complies with **ROHS** standard, and **PHTHALATES free**.

Usage:
3~5% of Polyols



Please scan QR code to
get more information.

扫描二维码可以
获得更多信息。



无锡市新锦聚合科技有限公司
SUNGENIUS TECHNOLOGY CO.,LTD.

Tel : +86-510-8376-3355

+86-510-8311-3355

Service in English:

+86-510-8115-3355

Fax : +86-510-8376-3358

Web : www.sungenius.com



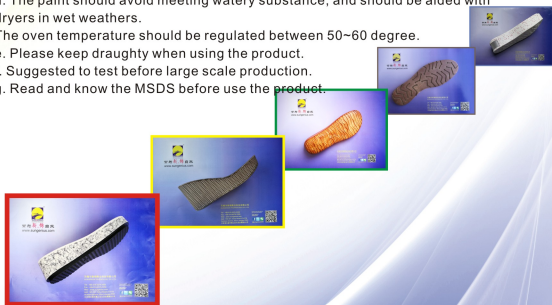
聚氨酯鞋材涂料 | PU SOLES PAINT

常为**新.锦**自来

The product applied to PU shoe soles both watery and oily release agent, with intensely bright, strong saturation and coherence effect. Needn't wash the shoe soles before spray paint.

Usage:

- a. The product is concentrated, please use our professional diluents.
- b. The suggested compounds of paint and diluent is 1:2.5~3 in mass number into 13~16s viscosity.
- c. It is recommended to use our matt agent making glossy effect.
- d. The paint should avoid meeting watery substance, and should be aided with dryers in wet weathers.
- e. The oven temperature should be regulated between 50~60 degree.
- f. Please keep draughty when using the product.
- g. Suggested to test before large scale production.
- g. Read and know the MSDS before use the product.



Please scan QR code to get more information.

扫描二维码可以获得更多信息。



无锡市新锦聚合科技有限公司 SUNGENIUS TECHNOLOGY CO.,LTD.

Tel : +86-510-8376-3355

+86-510-8311-3355

Service in English:

+86-510-8115-3355

Fax : +86-510-8376-3358

Web : www.sungenius.com



聚氨酯鞋材模内漆 | INMOULD COATING FOR PU SOLES/DIP SHOES

常为**新.锦**自来

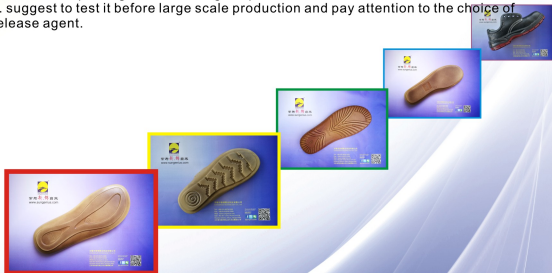
The product specially applied coloring or coating to DIP shoes with covering foam line, strong saturation.

Usage:

- The temperature of molds should be 40~60 degree.
- Spray the release agent evenly into molds, and clean with cotton.
- The suggested compounds of Inmould coating and MEK diluents is 1:1 diluted into 10s of viscosity(cup#4); spray evenly into molds.
- Pouring PU materials into moulds, close the moulds.

Tips:

- The product is concentrated, please fully dilute with MEK before use.
- Please keep droughts when using the product.
- suggest to test it before large scale production and pay attention to the choice of release agent.



Please scan QR code to get more information.

扫描二维码可以获得更多信息。



无锡市新锦聚合科技有限公司
SUNGENIUS TECHNOLOGY CO.,LTD.

Tel : +86-510-8376-3355

+86-510-8311-3355

Service in English:

+86-510-8115-3355

Fax : +86-510-8376-3358

Web : www.sungenius.com



常为**新.锦**自来

水性脱模剂 |
WATER BASED RELEASE AGENT
FOR PU SHOE SOLES

It is professional for PU shoe soles, with intensely bright, strong skin, without foaming line, easy clear the mould. needn't wash the sole before spray color.

Usage:

- Clean well the mould.
- Mix with normal water before using.
- Mould temperature: 40-60degree.
- Spray using nozzle gun diam 0.3 mm.
- Tank pressure 0.8 -1 bar, air pressure 2.5 bar.
- Spray the release agent directly into the mould.
- After spray the release agent dry it with air, and clean by cotton.

Please scan QR code to
get more information.

扫描二维码可以
获得更多信息。



@sungenius3355

无锡市新锦聚合科技有限公司
SUNGENIUS TECHNOLOGY CO.,LTD.

Tel : +86-510-8376-3355
+86-510-8311-3355

Service in English:
+86-510-8115-3355

Fax : +86-510-8376-3358

Web : www.sungenius.com



常为**新.锦**自来

聚氨酯鞋材模内漆 | INMOULD COATING FOR PU SOLES/DIP SHOES

本品应用于聚酯型PU鞋底及连帮鞋的模具内喷涂着色，具有施工简单、高附着力、盖发泡线性能等优点，本品系水性、油性脱模剂通用型。

用法：

- 1、鞋底模具模温控制在40-60°C之间；
- 2、向模具内均匀喷涂脱模剂，用压缩空气吹净或棉布擦净；
- 3、将模内漆按漆：稀释剂=1：1的比例稀释至10s粘度(涂4号杯)，向模具内均匀喷涂；
- 4、待模内漆表干后向模具内浇注鞋底原液，合模。

说明：

- 1、本品为高浓度浓缩型,使用前请使用稀释剂充分稀释。
- 2、在使用模内漆喷涂时，应保持良好的通风环境。
- 3、建议在批量生产前，先做小样测试，并注意脱模剂的选择。



Please scan QR code to
get more information.

扫描二维码可以
获得更多信息。



@sungenius3355

无锡市新锦聚合科技有限公司
SUNGENIUS TECHNOLOGY CO.,LTD.

Tel : +86-510-8376-3355

+86-510-8311-3355

Service in English:

+86-510-8115-3355

Fax : +86-510-8376-3358

Web : www.sungenius.com